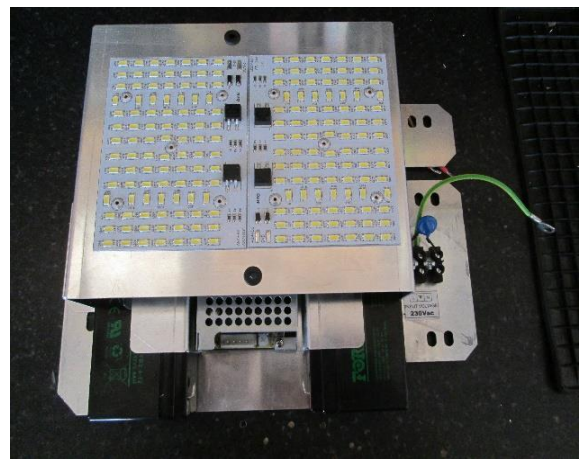
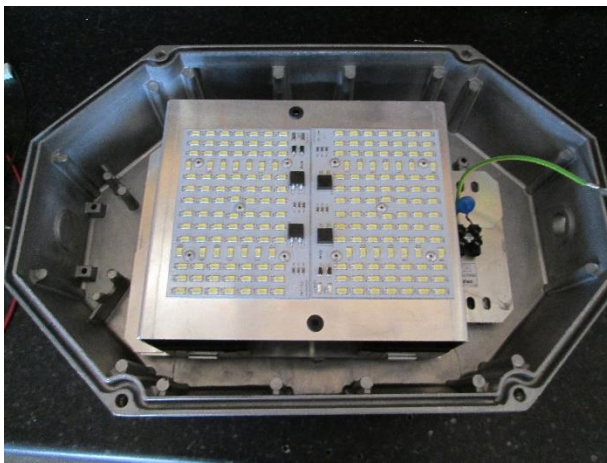


PRODUCT NAME: EMERGENCY – BATTERY- BACKUP-
LED RETROFIT INNER- 40 WATT FOR INDUSTRIAL
BULKHEAD LIGHTING: /B40/MAG40/44/ACDC
BULKHEADS



1X SOLUTION, 1X LED RETROFIT INNER: 1X COMPLETE EMERGENCY BATTERY BACKUP LIGHTING UNIT!

Direct LED lighting replacement: Standard B40/MAG40/44 Light casing.

Retrofit instruction: Disconnect baluster and bulb, Replace with Emergency Battery Backup retrofit inner. Connect and light will operate and supply constant lighting.

Benefits of LED retrofit

- No need to change existing B40/MAG40 Light casing.
- Minor effort to change to emergency retrofit – disconnect inner gear only.
- High lumens per wattage (40W/4000lm) 4000k natural white.
- Highly economical in power use and routine maintenance.
- Direct replacement of the 70watt (Osram sodium vapour bulb) to emergency lighting.
- Long live expectancy.
- LED technology to the highest level of retrofitting design.

*Kindly direct all enquiries to Chris Herholdt at 082 875 7053, by email to
ghekosolarsolutions@gmail.com*



- Locally manufactured in South Africa by Gheko Solar Solutions.
- High efficiency rating / operate from 90Vac – 230Vac with build in safety factors.
- 4 nut fastening method.
- Affordable: value for product to price against maintenance and power consumption
- Repairable: all parts are repairable or replaceable with minor effort.

TECHNICAL SPECIFICATIONS:

(60W SINGLE OUTPUT WITH BATTERY CHARGER (UPS FUNCTION))

Product: LED Retrofit Inner	Product Code	EM-BATT-RF-INNER-B40-40W-24V-000K,4000K,5000K
OUTPUT	DC VOLTAGE	27,6V
	RATED CURRENT	0.75A
	VOTAGE TOLERANCE	1,0%
INPUT	VOLTAGE RANGE	90-264VAC
	FREQUENCY RANGE	47-63Hz
	EFFICIENCY (TYP)	84%
	AC CURRENT(TYP)	1A/230VAC
	LEAKAGE CURRENT	1Ma/240VAC
PROTECTION	OVERLOAD	MOV & 105-150% Rated output power/recovers automatically after fault condition removed
	OVER VOLTAGE	28.98-37.26V
	BATTERY CUT OFF	21-22V
ENVIRONMENT	STORAGE TEMP,HUMIDITY	-20-85°C 10-95%RH
	VIBRATION	10-500Hz 2G10Min
SAFETY&EMC	SAFETY STANDARDS	UL60950-1,TUV EN60950-1 APPROVED
	WITHSTAND VOLTAGE	O/P-FG.05KVAC
	ISOLATION RESISTANCE	I/P-O/P,I/P-F,G-FG:100MOhms/500VDC
	EMC EMISSION	EM55022(CISPR22)
	EMC IMMUNITY	EN6100-4-2,3,45,6,8,11

Kindly direct all enquiries to Chris Herholdt at 082 875 7053, by email to ghekosolarsolutions@gmail.com

FEATURES	UNIVERSAL AC INPUT/FULL RANGE, PROTECTION(SHORT CIRCUIT,OVERLOAD,OVER VOLTAGE) BATTERY LOW PROTECTION, BATTERY REVERSE POLARITY PROTECTION.
-----------------	---

TECHNICAL SPECIFICATIONS:

(LED PCB 40W-24VOLT DC)

Product: LED PCB BOARD	Product Code	EM-BATT-RF-INNER-B40-40W-24V-000K,4000K,5000K
OUTPUT	DC VOLTAGE	40W-24VDC
	RATED CURRENT	
INPUT	VOLTAGE RANGE	24VDC
COLOUR RENDERING	3000K	Warm white
	4000K	Natural white
	5000K	Cool white
LUMENS	100lm/w	4000Lm
Battery	VOLTAGE	12VDC
	AMP/H	1,4Amp/h
	TYPE	Sealed acid
Notes	LED PCB Board uniquely designed by Gheko Solar Solutions and manufacturing Partners. PCB Board Code Marked at right corner : LED24VDCV1GS24V	

Applications

This LED B40/MAG40 **EMERGENCY** Light retrofit product is one of the kind, developed and manufactured in South Africa by Gheko Solar Solutions. It's a 4 nut fastening method system for a fast and simple way for the replacement, of a baluster/transformer and bulb from the standard B40 Light issue) into an Emergency light

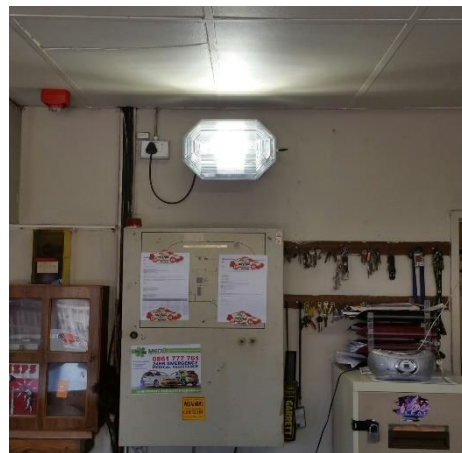
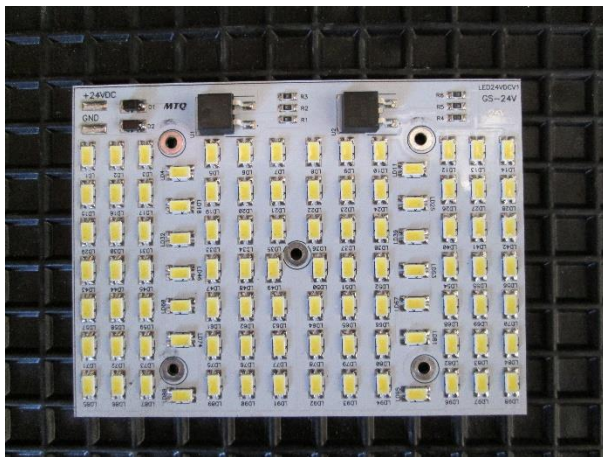
This retrofit is ideal for the industry where Safety is an issue. A saving of up to 60% on the energy cost is possible. Further benefits are that there are a reduction in maintenance due to the long life of an LED light and no necessity to stock pile the components.

Kindly direct all enquiries to Chris Herholdt at 082 875 7053, by email to ghekosolarsolutions@gmail.com

Other Specifications

- Operating Voltage at 24vdc constant voltage and current.
- Battery size 2x 1, 4 amp/h 12volt batteries connected in series.
- Batteries are charged by power supply with build in safety factors, at constant voltage and current supply.
- This light is working normally, as soon as power has failed it will be able to keep on working for 2 hours, until power has been resolved, the power supply will charge batteries until full capacity, this LED will be working without failure.
- Safe time on installation and maintenance, repairs done by connecting and disconnecting connector plugs.

LED PCB -24VDC PRODUCT CODE: LED-24VDCV1-GS-24V



Note

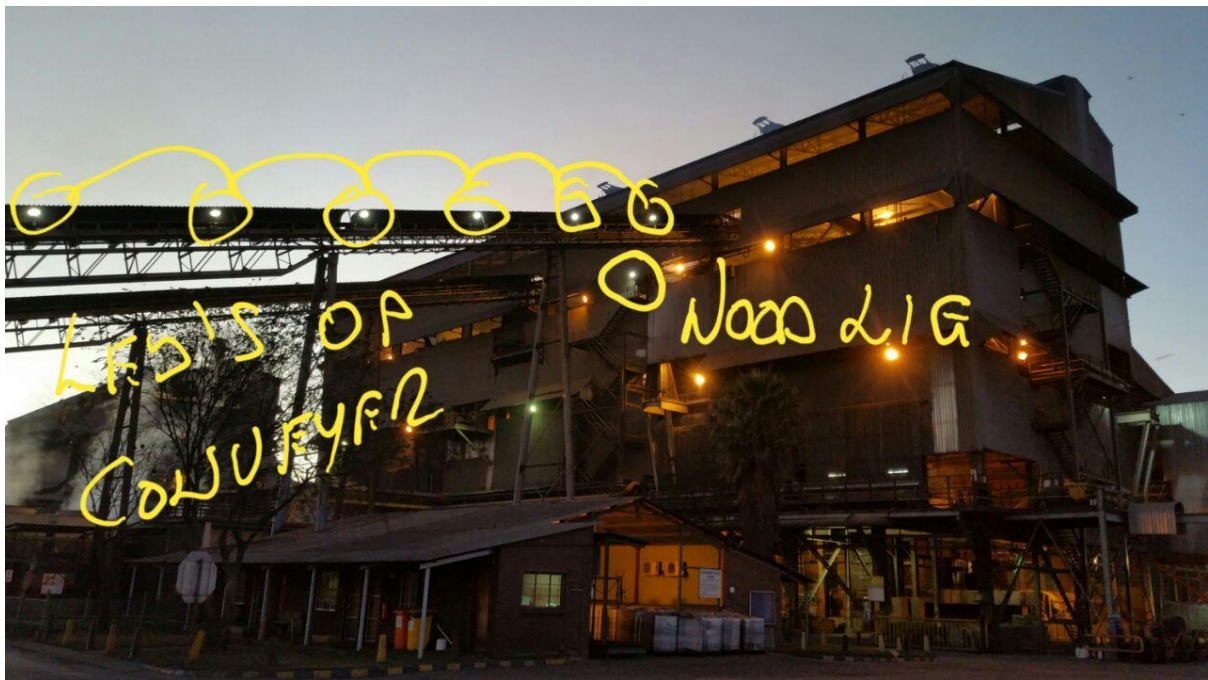
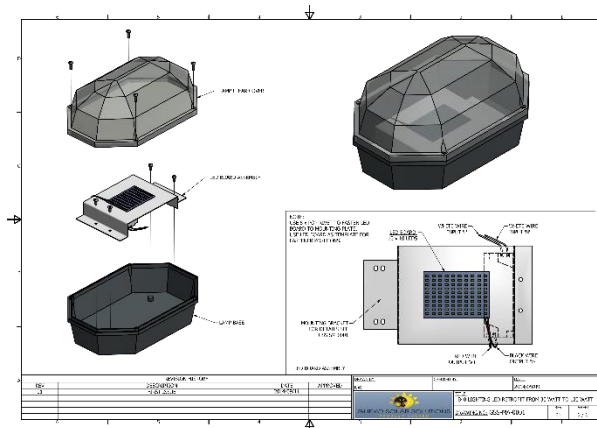
This product (LED RETROFIT, LED-PCB- PLATE) is uniquely designed and manufactured by Gheko Solar Solutions and Manufacturing partners in South Africa

This EMERGENCY retrofit plate could easily be fitted on most popular bulk head lighting:

B40/ MAG 40/ MAG44 Standard unit 90vac- 230vac / 4000k or 5000k /20 watt

Kindly direct all enquiries to Chris Herholdt at 082 875 7053, by email to ghekosolarsolutions@gmail.com

It's now possible to change any bulkhead fitting into an Emergency light without removing old light casing



On request the retrofit product could be built with:

- 3000k warm white LED
- 4000k natural white LED

Kindly direct all enquiries to Chris Herholdt at 082 875 7053, by email to
ghekosolarsolutions@gmail.com



- 5000K cool white LED
- SABS Certification in process
- Current users – Mining such as Glencore Group, Anglo Platinum, Lonmin and Warehouses
- Eskom lab report available

Kindly direct all enquiries to Chris Herholdt at 082 875 7053, by email to ghekosolarsolutions@gmail.com